



## | Melted Wall Lamp

Installation Guide

## | Melted Wall Lamp



This wall lamp is simple to assemble.

It is only necessary to fix the bracket on the wall (two screws that are included) and after being firmly fixed on the wall, you must connect the wires to the LED system.

The LED system already includes a transformer ready for 240 V;

The support was designed to leave space between the wall and the lamp to let the light through about 10 mm;

After making the connections, just fit the lamp on the support by pushing it up to the wall (up to the limit) and feel that it is stuck;

The support contains on the front a bar for the lamp not to fall forward;

### **Very important note:**

The support must be fixed to the wall on top of the wire outlet of the wall, to be able to fully touch the wall and fit in the support;





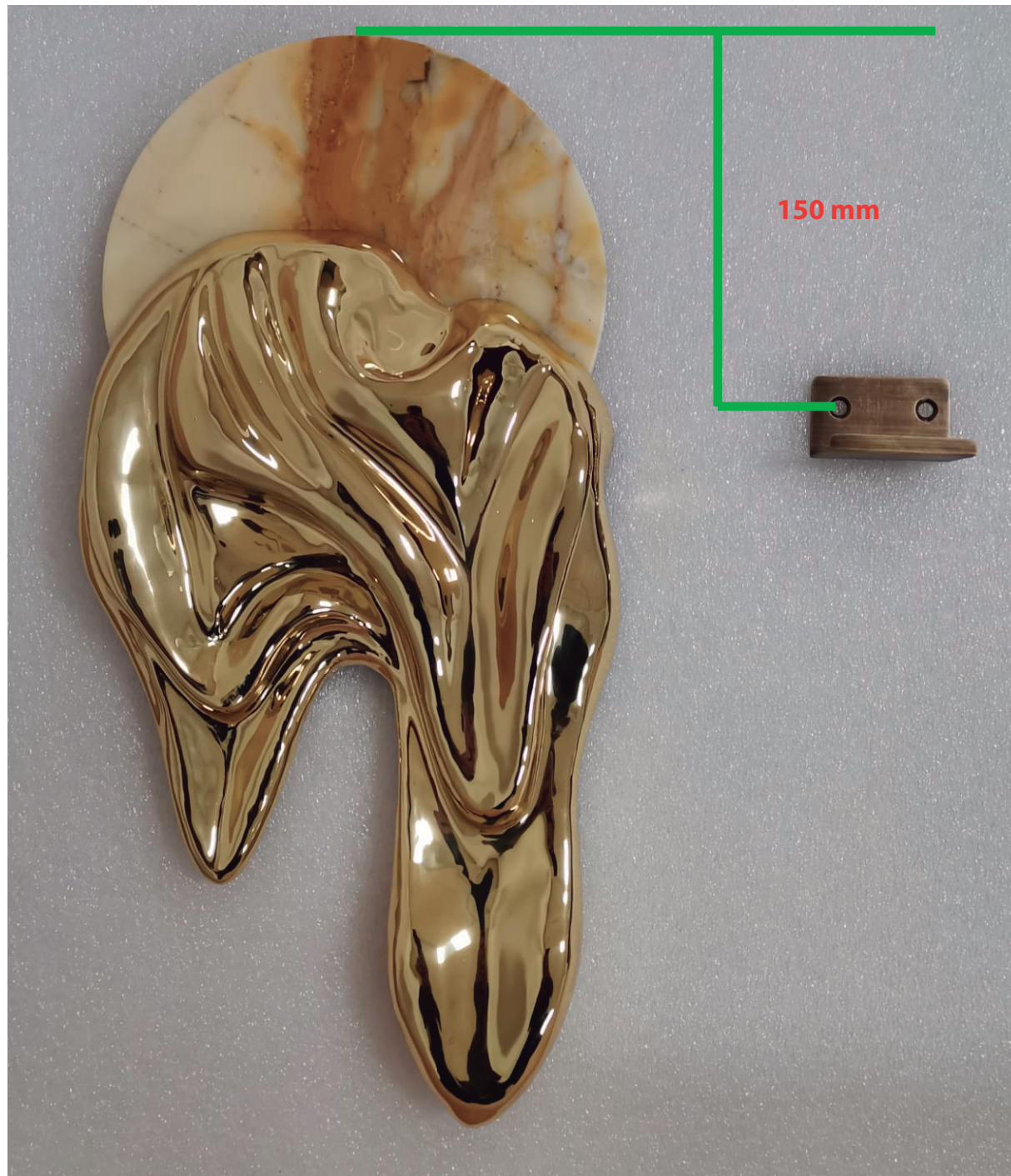
How to pick up the piece with your hands:

Since the part of the marble is much heavier, in order not to damage the brass plate, it should always be handled on the part of the stone.



We do not recommend that you place the front of the lamp on any surface to avoid scratching.





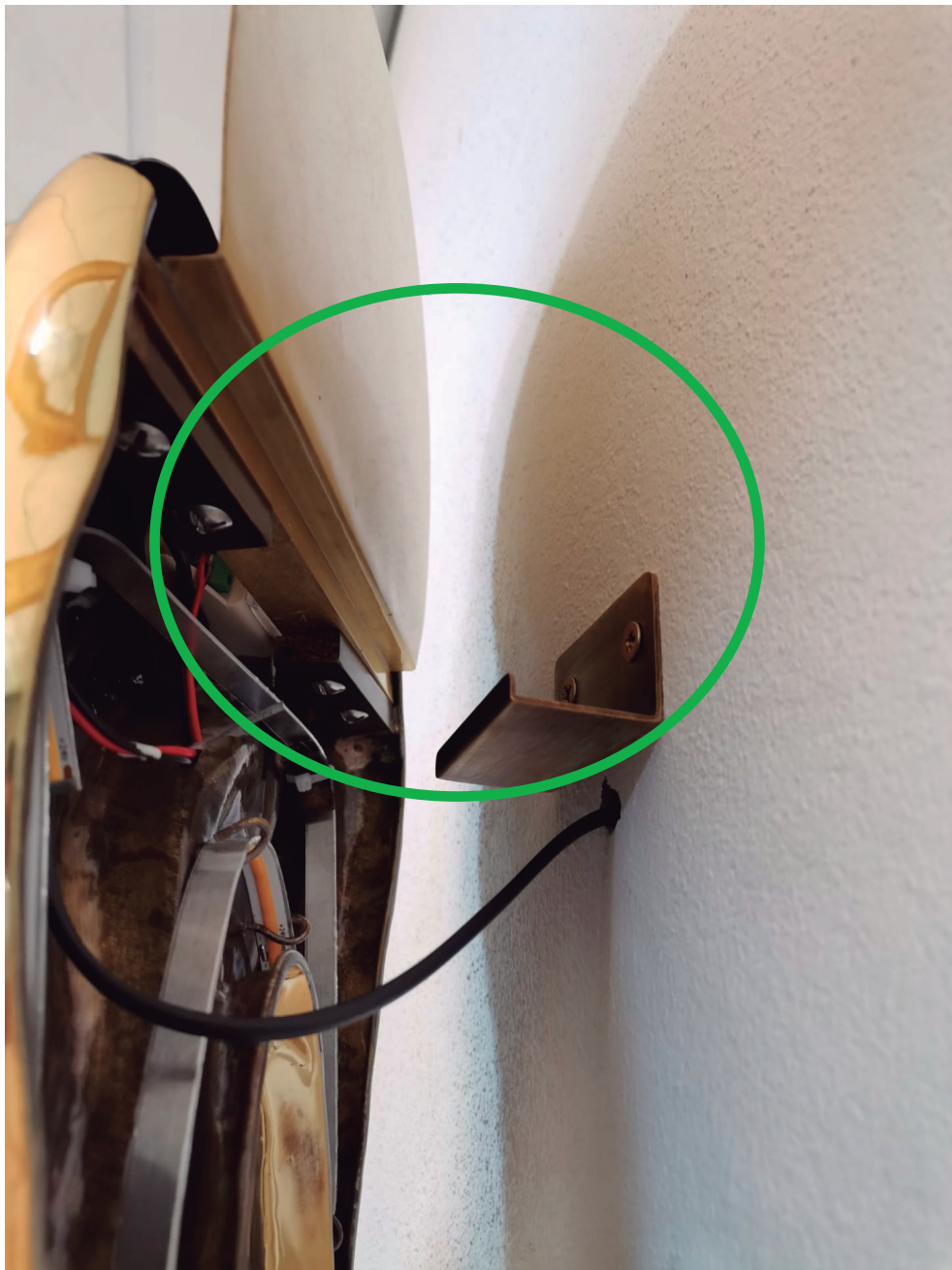
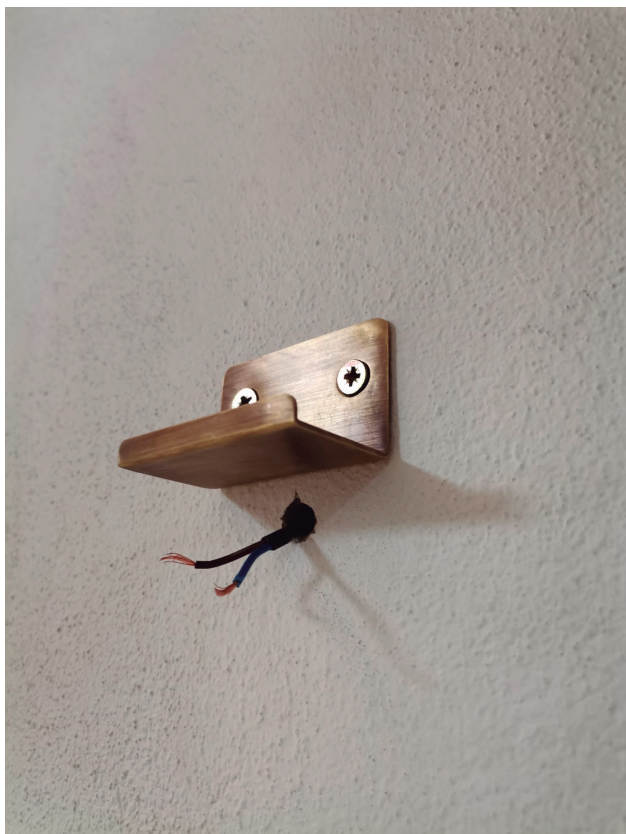
The distance from the hole in the support to the top of the lamp is 150 mm.

Remember, you need to fix the support on top of the wires;  
Just be 10 mm above the wires;

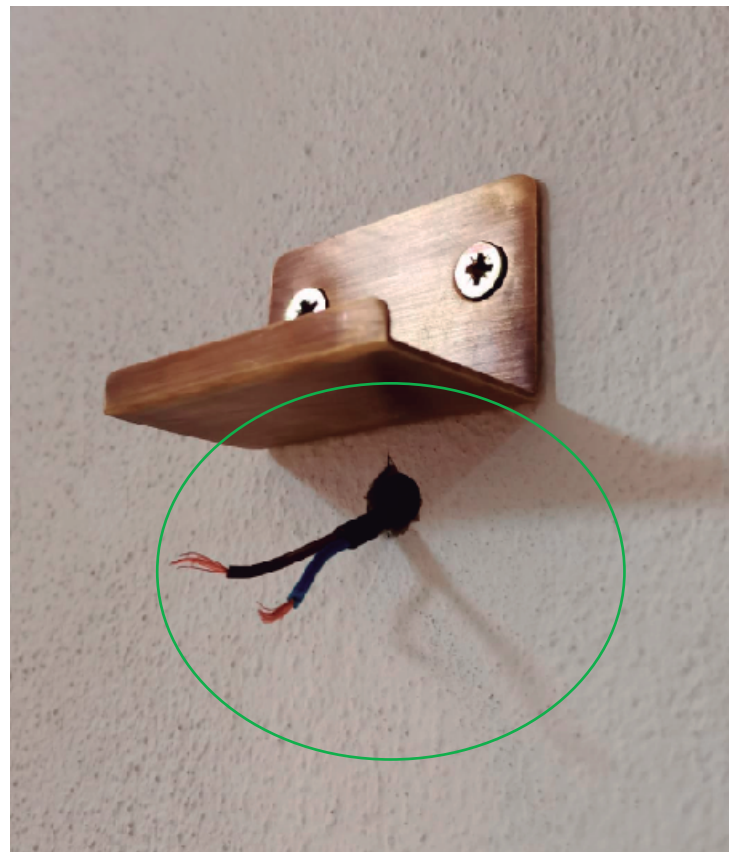




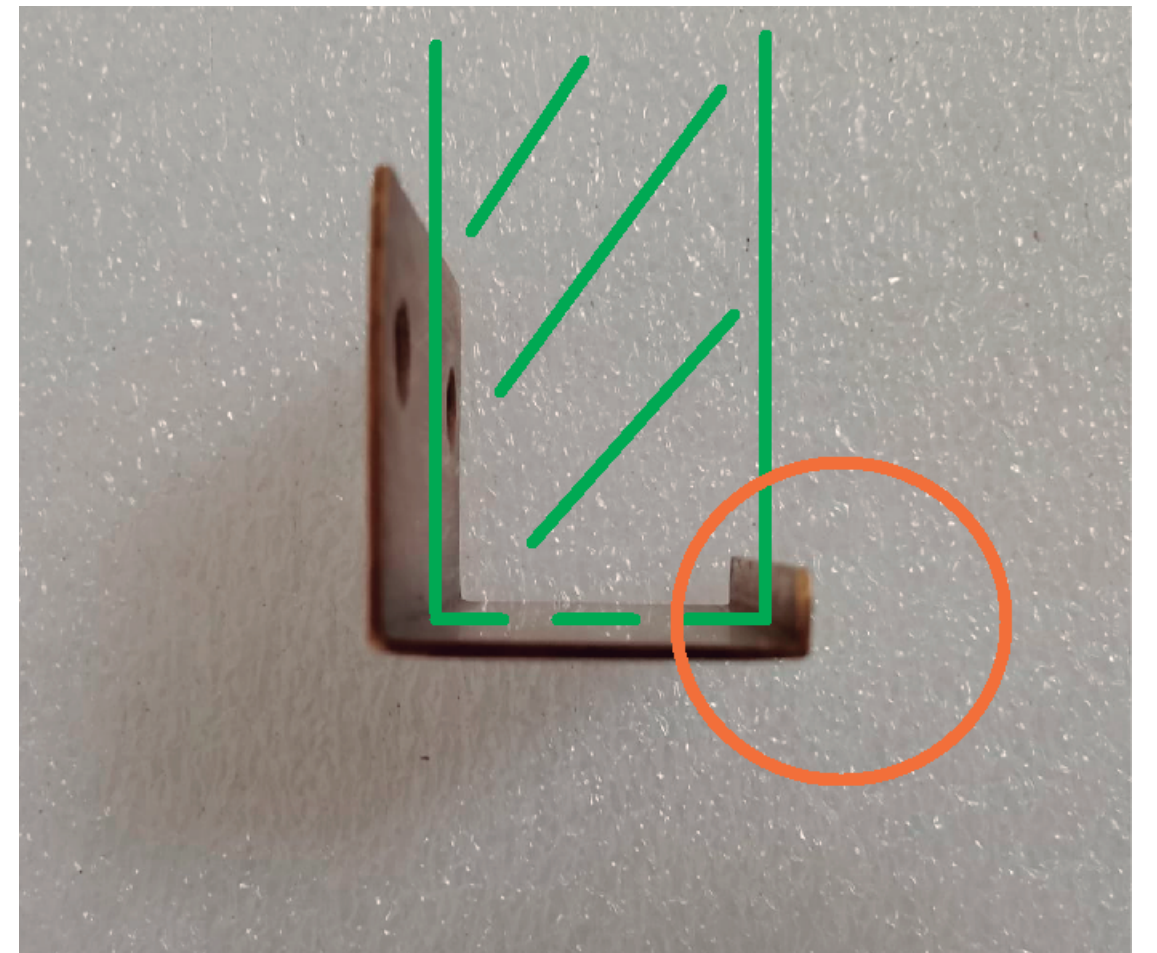
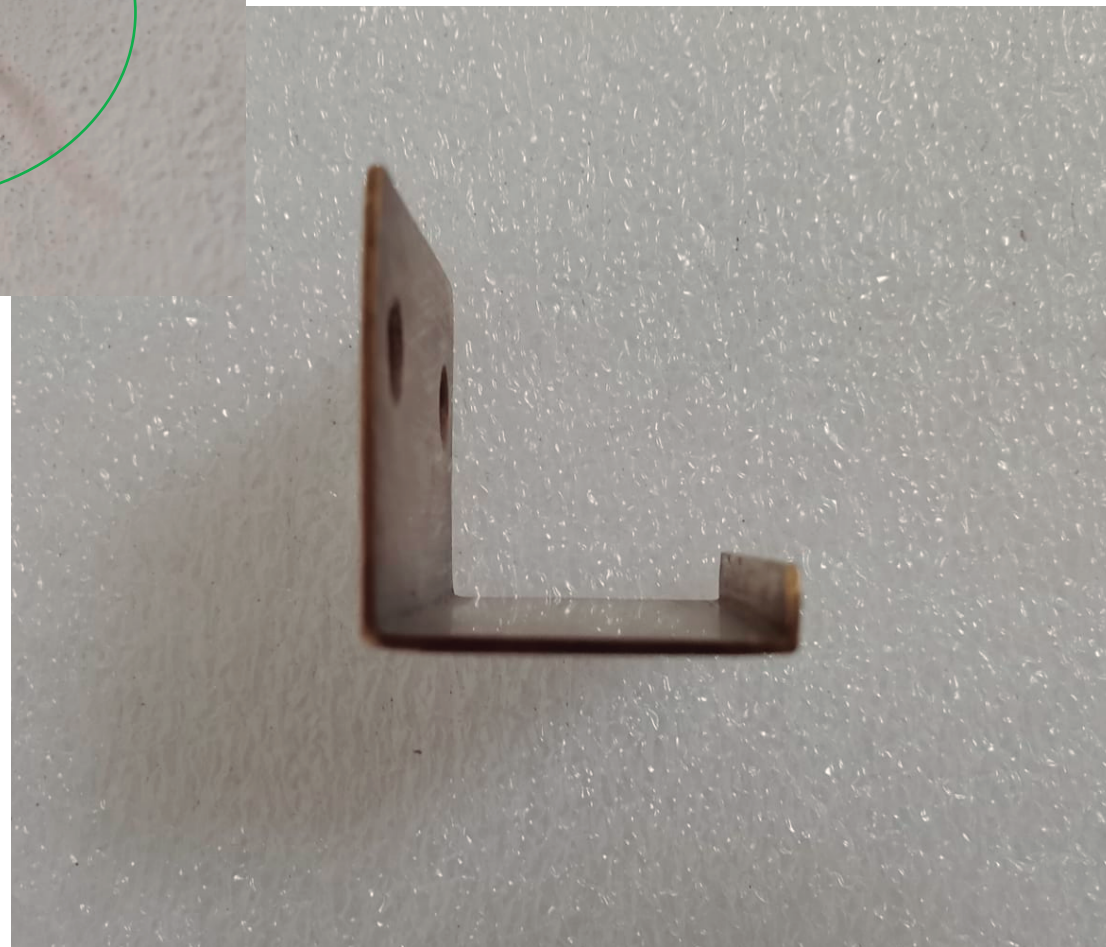
Example of fitting the support  
on the piece after it is fixed to the wall;







( X 2 )







**Transformer for LED to 240 V**

